

SEMESTER 2

CURTIN ▶▶ **ORIENTATION**



INTERNATIONAL PREP WEEK:

13-18 JULY 2009

www.international.curtin.edu.au



ORIENTATION WEEK:

20-24 JULY 2009

www.oweeek.curtin.edu.au

CONTENTS

USEFUL CONTACTS

STUDENT CENTRAL

Building 101
Tel: 9266 3399
www.students.curtin.edu.au

CURTIN STUDENT GUILD

Building 106
Tel: 9266 2900
www.guild.curtin.edu.au

THE LEARNING CENTRE

Building 105, Library Level 1
Tel: 9266 3825
www.learningsupport.curtin.edu.au

INTERNATIONAL STUDENT ADVISERS

Sharon Woodfield / Sandra Rives
Location: Hayman Hall, Building 102
Tel: 9266 2434
Email: isadviser@curtin.edu.au

FIRST YEAR EXPERIENCE COORDINATOR

Location: START (Student Transition and Retention Team) Building 102
Tel: 9266 4761
Email: newtocurtin@curtin.edu.au
www.unilife.curtin.edu.au



www.oweeek.curtin.edu.au

FACULTY CONTACTS

CURTIN BUSINESS SCHOOL

Building 407, Ground Floor
Tel: 9266 7713
www.cbs.curtin.edu.au

FACULTY OF HEALTH SCIENCES

Building 400, Level 2
Tel: 9266 4583
www.healthsciences.curtin.edu.au

FACULTY OF HUMANITIES

Building 209, Level 2
Tel: 9266 3400
www.humanities.curtin.edu.au

FACULTY OF SCIENCE & ENGINEERING

Building 314, Level 1
Tel: 9266 4600
www.scieng.curtin.edu.au

CENTRE FOR ABORIGINAL STUDIES

Building 211
Tel: 9266 7091
Toll No: 1300 486 232
www.gunada.curtin.edu.au

CURTIN WELCOMES YOU

Orientation will prepare you for your time as a student at Curtin in a fun and informative way. Students who participate in orientation programs get off to a better start when classes begin.

Orientation runs over two weeks. The first week, Prep Week, includes events and activities solely for international students. The second, O Week, is for both international and local students.

Prep Week and O Week are designed to help you make the best start at Curtin. Orientation will help you:

- Find your way around campus and the location of your classrooms
- Sort out any administration details
- Learn how the library works
- Work out parking arrangements or other transport options
- Learn about the support services
- Discover all the extra opportunities available including social, community and recreational activities
- Meet fellow students and the key teaching and support staff in your course.

TO SUPPORT YOUR ORIENTATION, YOU WILL RECEIVE:

- This O Week Booklet outlining all the activities and events during Prep and O Week (Also available at www.oweeek.curtin.edu.au)

- The A-Z Passport Guide that contains all the things you'll need to know during your time at Uni. Hold on to this booklet as it is a useful resource! (Also available at www.oweeek.curtin.edu.au/local/docs/oweeek_passport.pdf)
- Several E-newsletters during your first semester at Curtin to remind you of important dates and activities (Also available at www.unilife.curtin.edu.au/newtocurtin/index.cfm)

ARRIVING LATE?

Orientation is the official start of the academic year, however some students are unable to attend Prep Week or O Week. If you are unable to attend orientation, please check the O Week website at www.oweeek.curtin.edu.au which provides:

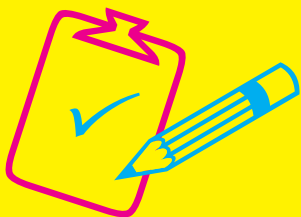
- A checklist of important things you need to complete before starting university
- Key information provided during Prep Week and O Week available for download.

Please note that Centrelink recognises O Week as the official start of semester so if you are receiving Centrelink payments these will start from O Week.

If you have missed the Prep Week or O Week program and have any concerns about beginning your studies, please check the O Week website www.oweeek.curtin.edu.au or contact the First Year Experience Coordinator as soon as possible. Contact details are listed on the inside cover of this booklet.



ORIENTATION CHECKLIST



ALL NEW STUDENTS NEED TO:

- Check you are enrolled in the correct units (check your enrolment advice)
- Become familiar with OASIS (see p.19)
- Plan your semester timetable by registering for your classes via eStudent (via OASIS)
- Visit Start Up in OASIS to learn how to make the best possible start at Curtin, and enter the draw to win great prizes!
- Attend O Week (July 20 - 24) and all your Faculty events (see www.oweeek.curtin.edu.au)
- Attend a "Campus Tour", a "Survival @ Your Library Tour" and a "Bus Tour"
- Find out where your classes will be held
- Explore Curtin's clubs & associations
- Organise your parking permit or public transport route

INTERNATIONAL STUDENTS ALSO NEED TO:

- Contact your family to let them know you have arrived safely
- Settle into your permanent accommodation
- Apply online to obtain your Overseas Student Health Cover card
- Open a bank account
- Attend Prep Week (July 13 - 18)

NOTES:



ORIENTATION ACTIVITIES

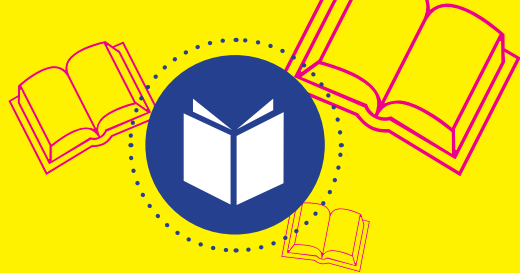
13-24 JULY



During Orientation, a series of activities and events will be available. Events only happen once during **PREP WEEK** and **O WEEK** while activities are reoccurring.

There are *two types of events* available to students. **Central, social events** are outlined and timetabled in this booklet, while **Faculty events** (which are specific to you and are compulsory to attend) can be found at www.oweeek.curtin.edu.au.

Faculty orientations are only held in **O WEEK** and if you miss them, you will be missing vital information to get you off to the best start! We suggest you use the **O WEEK** timetable on page 14 to schedule your Faculty events so you have a complete Orientation timetable.



SURVIVAL @ YOUR LIBRARY TOUR & CATALOGUE DEMONSTRATIONS

Discover helpful resources and facilities with a guided tour of the Robertson Library on the Bentley Campus.

Duration: 40 minutes

Location: Robertson Library (Building 105). Follow the signs in the foyer to the lounge @ the library.



GUILD EXPLORE TOURS

Campus tours are run by the Student Guild and are a great way to find out what is available to you on campus and meet other students.

Also check out the kangaroo sausage sizzle organised by the Centre for Aboriginal Studies as part of the tour. Promotional gifts such as tattoos, flyers and hand-held flags will also be available!

Duration: 45 minutes

Location: Meet in Centrelink Courtyard in the Guild Building 106. Please arrive 10 minutes before the tour starts.



BANKWEST (OPENING ACCOUNTS)

Students will need to open a bank account for their financial transactions while they are living in Perth. It is entirely up to you to choose which bank you prefer to do business with. BankWest assists students in opening a bank account at their branch on the campus. When opening your accounts please come to BankWest with your living address in Perth, your phone number in Perth and a password or secure code (6-10 characters).

Please see www.bankwest.com.au for more information. Extended opening hours during Orientation: 9am - 5pm.

Location: BankWest, Building 408

Please note: Allow enough time for this as a large number of students open accounts during the orientation weeks.



ENTERTAINMENT

This icon designates any social activities available, such as music events and performances.

Enjoy the music as you get to know Curtin - get ready for some fabulous entertainment!

ADDITIONAL ACTIVITIES



COURTESY BUS TOURS

The Campus Courtesy Bus is a free service designed to connect car parks, student housing and the Curtin Bus Station with other locations on the Bentley campus.

The Curtin Student Ambassadors are running Courtesy Bus Tours during Orientation, leaving from the START (Building 102). Come and hop on for a ride of fun!



STUDENTS WITH MEDICAL CONDITIONS &/OR DISABILITIES

If you are a student with a special need requiring our assistance in order to study or complete an exam, please don't hesitate to contact the Disability Services:

Location: Building 109, Level 2 (lift access ♿)

Phone: 9266 7850

Hours: Mon-Fri, 8.30am - 5.00pm

Email: disabilityservices@curtin.edu.au



PC CHAMPS

(PERSONAL COMPUTING COACHING)

Not feeling confident about your computer skills? Curtin Volunteer! (CV!) mentors will work with you on a one-to-one basis until you have the computing know-how to progress confidently at University. The program covers Windows, browsing the internet, emails, OASIS, using the Library website, Microsoft Word, Excel and PowerPoint.

Contact Helen on 9266 1233, or email: H.Hesselberg@curtin.edu.au to book your one-hour time slot. Attend as many sessions as needed.



CURTIN STADIUM ACTIVITIES

Take the chance to try out the new Stadium facilities this Orientation! Activities include the gym, group fitness, ladies studio, sports, fitness testing and much more! Pick up the program at help points or go online: <http://recreation.curtin.edu.au>.



FOR INTERNATIONAL STUDENTS ONLY

PREP WEEK

13-18 JULY

PLEASE NOTE: INTERNATIONAL STUDENTS MUST ALSO READ THE FOLLOWING 0 WEEK SECTION



PROGRAM OF EVENTS

Rooms or locations on campus are referred to by their building number, level and then room number. For example, Building 402.310 is Curtin Business School – Building 402, Level 3, Room 10.

The first week of Orientation is Prep Week and is aimed at new international students. Prep week events occur once during the week and provide you with important information and support before university begins. During this week, international students will participate in various events and activities helping them to:

- Enrol in course units, prepare a timetable and register for classes
- Settle into housing
- Finalise overseas health cover
- Learn about student clubs and campus support services
- Open a bank account
- Buy text books
- Discover Perth and the local transport system
- Organise parking on campus
- Connect with other new international students
- Learn about the Australian way of life.

Student Central (Building 101) and START (Building 102) are the main support offices at Bentley campus and coordinate many of the services available to all international students.

INTERNATIONAL STUDENT ADVISERS:
Sharon Woodfield and Sandra Rives
Tel: 9266 2434
Email: isadvisers@curtin.edu.au

**13
JULY
MONDAY**



ENROLMENT BRIEFINGS

Elizabeth Jolley LT, Building 210.101

CBS	9.30am – 11.00am
Humanities	11.30am – 12.30pm
Health Sciences	1.00pm – 2.00pm
Science & Engineering	2.30pm – 3.30pm

All new international students must attend the Enrolment Briefing relevant to the Faculty they are entering.

At these sessions, students will be given appropriate enrolment information relating to their course and further information on Orientation.

NOTE: Payment of fees and acceptance of offer is NOT the same as enrolment. Once the enrolment process is completed, you will receive an Enrolment Advice. This is a record of your current study package. You should then obtain a Student Identification (ID) card from either your faculty Student Services Office or Student Central. The Student ID Card also serves as a Library Card.

Bring: 1) Letter of Offer
2) Original documents or certified copies of qualifications for Recognition of Prior Learning (RPL) application if applicable.



14 JULY TUESDAY



BIG AUSSIE BREAKFAST

8.00am – 10.00am
Outside Building 102

Breakfast is the most important meal of the day! Join us for a traditional Aussie breakfast. Meet up with Sven our Multi Faith Officer who runs a “free bread for students” stall during the semester here on campus.

CREATING CONNECTIONS

10.00am – 11.00am
Hollis LT, Building 401.001
Morning tea (foyer)

Curtin can be a daunting campus so this very entertaining session looks at what you can do to establish new friendships and avoid isolation. Come and learn Scotty's tricks on how to be part of this exciting community!

GETTING AROUND SAFE AND SOUND

1.00pm - 2.30pm
Norman Dufty LT, Building 210.102

Australia is very different from home so we want to teach you about road safety as well as looking after your personal safety and security. Plus we want you to have a great experience whilst in Australia too. This fun and interactive session will include information on how to obtain a driver's license, plan road trips, the 'Booze Bus', modification of cars and road regulations.

15 JULY WEDNESDAY



INTERNATIONAL ORIENTATION SESSION

9.00am - 10.30am
Elizabeth Jolley LT, Building 210.101
Followed by Campus Tours

If you are an International student you MUST attend this session, as vital information will be provided to you, such as:

- Your Overseas Student Health Cover
- Important Visa information
- And much more...

INFO EXPO

11.00am - 1.00pm
Guild Precinct Courtyard, Building 106

Join in the multicultural vibe at the Guild Precinct! The international student clubs have set up shops to greet you with food and music! Come and meet other Curtin International students on Campus - you will feel at home here!

THIS IS AUSTRALIA

2.00pm - 4.00pm
Elizabeth Jolley LT, Building 210.101

You have embarked on a great adventure! Yet studying and living in another country can be a culture shock to many. Find out in this fun and interactive session that this is normal! We will provide you with some great tips on how to make your Australian Experience an enjoyable one.

16 JULY THURSDAY



CITY EXPLORER

9.45am – 3.00pm
Buses leave from behind Building 408 (near Curtin Business School) at 10am sharp!

Hop on board to explore the City of Perth, Kings Park, Subiaco, Cottesloe & Fremantle!

This bus tour will allow you to capture stunning views of the City of Perth and the Swan River. We will then continue on via Perth's restaurants and café districts, along its famous beaches before heading down towards the cultural city of Fremantle. From 12pm noon, you are free to enjoy a meal in Fremantle's vibrant café strip, and take the chance to shop till you drop! The trip finishes back at Curtin around 3pm.

Cost: \$15 - including transport + a free shopping bag!

Bring: Wet weather gear (e.g. umbrella or rain coat) and money for your meal and souvenirs you might want to purchase.

Book your seat at a Help Point – this tour will sell out fast! Don't be late!

ORIENTATION ACTIVITIES KEY

Note: See page 4 for more details.

SURVIVAL @ YOUR LIBRARY TOUR

BANKWEST ENTERTAINMENT

GUILD EXPLORE TOURS

17 JULY FRIDAY



THE BRAIN GAME

9.00am – 10.00am
Building 408.1019 LT

The Brain Game session will give students the opportunity to explore ways of turning brainpower into successful learning. Discover what kind of learner you are and how well you can think “outside the square”. Turn brainpower into study success.

ENGLISH LANGUAGE SUPPORT SEMINAR

11.00am – 12.00pm
Building 408.1019 LT

If English is not your first language come and find out what we have in store to support you during your studies. Curtin has a variety of English Language Support programs - find out which one suits your needs.

DIAGNOSE YOUR ENGLISH

1.00pm – 2.00pm
Computer Lab, Building 501.304

Want to check out your strengths and weaknesses in English? With an English language specialist on hand to give you personal advice, try out UniEnglish in this computer session.

Register by emailing Katie Dunworth at: k.dunworth@curtin.edu.au

(CONT'D NEXT PAGE)

(CONT'D FROM PREVIOUS PAGE)

Q & A DAY

All day
Volunteer Help Booths or Building 102

Our volunteer help points and staff wearing Q&A badges are around campus to assist you with any burning questions - no question is too silly or too serious - we are here for you, so ask away!



18
JULY
SATURDAY

INTERNATIONAL STUDENTS COMMITTEE (ISC) DISCOVER PERTH TOUR

8.30am – 5.00pm
Meet outside Building 408 (CBS/
Physiotherapy) between 8.00am - 8.30am

The International Students Committee, the peak representative committee for all international students at Curtin, invites you to discover some of Perth's most beautiful attractions.

We will be travelling to the Swan Valley, famous for its wine, cheese and other fresh produce.

Caversham Wildlife Park: Meet Australia's unique native animals. Take a picture with a wombat or feed the kangaroos.

Sandalford Winery: One of the most famous wineries in Western Australia. Indulge in wine and cheese and admire the winery's beautiful scenery.

Margaret River Chocolate Factory: Mouthwatering chocolates free for tasting. Try their ice-cream or delicious hot chocolate.

Hillary's Boat Harbour: Enjoy the view of the Indian Ocean, and visit the wonderful shops and restaurants.

There is an optional visit to the Aquarium of Western Australia (AQWA) at Hillary's Boat Harbour. Entry costs \$14 per person.

So what are you waiting for? Sign up at the Guild Office Building 106.

Guild Members: \$25 per person (excluding AQWA entry and lunch).

Non-Guild Members: \$30 per person (excluding AQWA entry and lunch)

For more information, email Tommy Lin at isc@guild.curtin.edu.au or call 0430 030 810.



HELPFUL INFORMATION FOR INTERNATIONAL STUDENTS



OVERSEAS STUDENT HEALTH COVER (OSHC)

During your stay in Australia, you may need to see a doctor at some time. Medical services in Australia are not free. The Australian Government requires international students to be covered by health insurance (OSHC) and maintain cover for the length of their student visa.

WHAT DOES OSHC COVER?

OSHC covers the costs for:

- Out of Hospital Services
- In Hospital Services
- Prescription Medicines
- Emergency ambulance transport.

OSHC does not cover visits to the dentist, physiotherapist, optometrist, chiropractor and osteopathic services. It is recommended that students who may need these services speak to their health provider to obtain additional cover.

WHO ARE THE APPROVED PROVIDERS?

Curtin has gone through a process to determine the best value health insurance provider for its students. Curtin's preferred provider is OSHC Worldcare. Students with an OSHC Worldcare membership will have their bill sent directly to OSHC Worldcare for payment.

There are four approved providers:

- OSHC Worldcare
www.oshcworldcare.com.au
- Medibank Private
www.medibank.com.au
- BUPA Overseas Student Health Cover
www.overseasstudenthealth.com
- Australian Health Management Group
www.oshc.com.au

OSHC CARDS

All new students registered with OSHC Worldcare as their provider are required to go online to www.oshcworldcare.com.au and order their membership cards when they have a permanent address in Perth. Your membership number is your Curtin student number.

RENEWING OSHC

It is a requirement of your student visa to maintain your health cover for the term of your student visa. It is your responsibility to renew your health cover before it expires.

TO FIND OUT MORE

OSHC Worldcare representatives are available daily on campus at Student Central in Building 101 to assist you with all OSHC enquiries including renewals, cash claims and holiday credit. Information on OSHC Worldcare can be found at www.oshcworldcare.com.au.

Information on OSHC in general can be found at (<http://www.health.gov.au/internet/wcms/publishing.nsf/content/healthprivatehealth-consumers-oshc.htm>)

CHANGE OF ADDRESS

As an international student, you are required to provide your permanent Australian address to the University within seven days of your arrival.

If you change your address during your studies at Curtin, you must provide your new address to the University within seven days of your move. This requirement is a condition of the student visa and is very important. You may change your address through OASIS, or by completing a Change of Address form and submitting it to Student Central.



















13-18 JULY MY PREP WEEK TIMETABLE

Each Faculty runs academic programs for their students during Orientation. To find out what your Faculty has planned, visit www.oweb.curtin.edu.au and click on "Orientation Timetables" under the Bentley campus tabs. Attending your academic orientation is compulsory.

Orientation runs over two weeks. The first week, **Prep Week**, includes events and activities solely for international students. The second, **O Week**, applies to both international and local students. The following timetables show the events that will be happening throughout **Prep Week** and **O Week**. For more information about these events, see pages 7 and 16. Orientation activities being run during **Prep Week** and **O Week** are represented by icons in the timetables below.

TIME	MON 13	TUE 14	WED 15	THU 16	FRI 17	SAT 18
	ORIENTATION ACTIVITIES: SURVIVAL @ YOUR LIBRARY TOUR BANKWEST (OPENING ACCOUNTS) GUILD EXPLORE TOURS ENTERTAINMENT					
	 All Day 9am - 5pm	 9am - 5pm	 All Day 9am - 5pm	 12pm 9am - 5pm	 1.30pm 9am - 5pm	
	PREP WEEK EVENTS (VOLUNTEER HELP POINTS AVAILABLE ALL WEEK)					
8am		Big Aussie Breakfast: 8.00-10.00 Outside Building 102				ISC Discover Perth Tour: 8.30-5.00 Outside Building 408
9am	Enrolment Briefing: CBS: 9.30-11.00 Building: 210.101		International Orientation Session: 9.00-10.30 Building: 210.101 (Followed by Campus Tours)		The Brain Game: 9.00-10.00 Building: 408.1019	
10am		Creating Connections: 10.00-11.00 Building: 401.001 (Morning tea in foyer)		City Explorer: 9.45-3.00 Behind Building 408 (near Curtin Business School)		
11am	Enrolment Briefing: Humanities: 11.30-12.30 Building: 210.101		Info Expo: 11.00-1.00 Guild Precinct Courtyard		English Language Support Seminar: 11.00-12.00 Building: 408.1019	
12pm						
1pm	Enrolment Briefing: Health Sciences: 1.00-2.00 Building: 210.101	Getting Around Safe & Sound: 1.00-2.30 Building: 210.102			Diagnose Your English: 1.00-2.00 Building: 501.304	
2pm	Enrolment Briefing: Science & Engineering: 2.30-3.30 Building: 210.101		This is Australia: 2.00-4.00 Building: 210.101			
3pm						
4pm					Q&A: All Day Volunteer Help Booths	

20-24 JULY MY O WEEK TIMETABLE

TIME	MON 20	TUE 21	WED 22	THU 23	FRI 24
	ORIENTATION ACTIVITIES:  SURVIVAL @ YOUR LIBRARY TOUR  BANKWEST (OPENING ACCOUNTS)  GUILD EXPLORE TOURS  ENTERTAINMENT				
	 10am, 11am, 12pm, 1pm, 5pm  9am - 5pm  All Day  10am, 11am, 1pm	 11am, 12pm  9am - 5pm  10am, 11am, 1pm	 11am, 12pm, 5pm  9am - 5pm	 11am, 12pm  9am - 5pm  10am, 11am	 11am, 12pm  9am - 5pm  10am, 11am
O WEEK EVENTS (VOLUNTEER HELP POINTS AVAILABLE ALL WEEK)					
9am	Official Welcome: 9.00-10.00 The Stadium		International Orientation Session (REPEAT): 9.30-10.30 Building: 210.102	Postgraduate Research Student Orientation Session: 8.30-11.30 Building: 210.104	Kick Starting Your Career: 9.00-10.30 Building: 213.104
10am	Study Exchange & Study Abroad Session: 10.00-12.00 Building: 105.107 (For study abroad & exchange students)	Creating Connections (REPEAT): 10.00-11.00 Building: 213.104 & Foyer (Morning tea in foyer)			
11am					The Brain Game (REPEAT): 11.00-12.00 Building: 213.104
12pm				Cultural Literacy 500: 12.00-1.00 Building: 210.104	
1pm		MIGHTY IT: 1.00-2.00 Building: 210.102	Stretching Your Student Dollar: 1.00-2.00 Building: 210.102	CUPSA Lunch: 1.00-2.00 Centrelink Courtyard	Succeeding at Uni: 1.00-2.00 Building: 213.104
2pm		Getting on the Right Track (for New Mature-age Students): 2.00-4.00 Building: 210.102			
3pm					
4pm			The Barn-Yarn: 4.00-5.00 Guild Tavern, Building: 106	Housing Residence Welcome: Location: Campus housing (Contact your Residence Office)	
5pm					
6pm					O Week Party: 6.00-Late Guild Tavern, Building: 106

FOR ALL NEW STUDENTS 0 WEEK 20-24 JULY

PROGRAM OF EVENTS

The second week of Orientation is 0 Week and is aimed at all new students. During this week, new local and international students will be able to participate in numerous events and activities on campus, including academic orientation sessions specific to each Faculty. Faculty orientation timetables can be found on the website: www.oweeek.curtin.edu.au

Curtin's Student Transition and Retention Team (START) coordinates orientation and provides support services throughout the year. For more info: www.unilife.curtin.edu.au

ORIENTATION ACTIVITIES KEY

Note: See page 4 for more details.

-  SURVIVAL @ YOUR LIBRARY TOUR
-  BANKWEST
-  ENTERTAINMENT
-  GUILD EXPLORE TOURS

20 JULY MONDAY

OFFICIAL WELCOME

9.00am - 10.00am
The Stadium

Come and get connected with your fellow students in the brand-new Curtin Stadium. A brief welcome by the Vice Chancellor, Jeanette Hackett, senior executive management and the Guild will set off the day full packed with entertainment!

STUDY EXCHANGE AND STUDY ABROAD SESSION

10.00am - 12.00pm
Building 105.107 LT
For study abroad and exchange students only

A *must* for study abroad and exchange students. We'll provide helpful tips about adapting to the Curtin way of life as well as important enrolment info. Don't miss this!

21 JULY TUESDAY

CREATING CONNECTIONS (REPEAT)

10.00am - 11.00am
Building 213.104 LT & Foyer
Morning tea (foyer)

Curtin can be a daunting campus and this very entertaining session looks at what you can do to establish new friendships and avoid isolation. Come and learn Scotty's tricks on how to be part of this exciting community.

MIGHTY IT

1.00pm - 2.00pm
Norman Dufty LT, Building 210.102

Not so confident with computers and navigating around various software packages? We'll turn you into a computer wiz after this session!

GETTING ON THE RIGHT TRACK (FOR MATURE-AGED STUDENTS)

2.00pm - 4.00pm
Norman Dufty LT, Building 210.102

This session aims to relieve your anxiety about returning to formal study!

Think of all the life skills and world knowledge you can bring to university that younger students might not necessarily have? Meet our panel of current mature-age students as they discuss their experiences and pick up some tips on how to avoid certain dramas!

22 JULY WEDNESDAY

INTERNATIONAL ORIENTATION SESSION (REPEAT)

9.30am - 10.30am
Norman Dufty LT, Building 210.102

If you are an International student and missed out on last week's session, you **MUST** attend this session, as vital information will be provided to you, such as:

- Your Overseas Student Health Cover
- Important Visa information
- And much more...

STRETCHING YOUR STUDENT DOLLAR

1.00pm - 2.00pm
Norman Dufty LT, Building 210.102

Money, money, money... must be funny... in a rich man's world!

Come and join us in a fun session where we teach you how to get the best out of your student dollar. We'll provide you with some handy budget tips and how to live a healthy lifestyle from the local produce.

THE BARN-YARN

4.00pm - 5.00pm
Guild Tavern, Building 106

Just arrived from a rural or remote region of Australia? Come along for a drink and snack, and meet your fellow country mates at the Tavern!



23

JULY

THURSDAY



POSTGRADUATE RESEARCH STUDENT ORIENTATION SESSION

8.30am – 11.30am
Elizabeth Jolley Seminar Room, 210.104

Orientation Session for Research Doctoral and Research Masters Postgraduate Students (i.e. not suitable for postgraduate course work students). Run by the Office of Research and Development.

CULTURAL LITERACY 500

12.00pm - 1.00pm
Elizabeth Jolley Seminar Room, 210.104

International Postgraduate Students, this is *your* session! We offer support with research methods, construction of content and much more, whether its for doing research or coursework.

CUPSA LUNCH

1.00pm - 2.00pm
Centrelink Courtyard

CUPSA (Curtin Postgraduate Students Association) has a gathering for new postgraduate students. To join our lunch please register at the Guild reception desk.

HOUSING RESIDENCE WELCOME

Campus housing
For students living in on campus housing only

For time and location of your respective Housing Residence Orientation, please check with your Residence Office.

24

JULY

FRIDAY



KICK STARTING YOUR CAREER

9.00am – 10.30am
Building 213.104 LT

Curious about where your degree can lead to? Join this fun and interactive workshop and discover our brilliant Career Centre website which can assist you in finding part-time and vacation jobs, as well as work experience opportunities.

THE BRAIN GAME (REPEAT)

11.00am - 12.00pm
Building 213.104 LT

Please refer to page 9 for more details.

SUCCESSING AT UNI

1.00pm - 2.00pm
Building 213.104 LT

Handy tips on how to be a top Uni student. University can be daunting at first - so much to do! Where do I start? We will help you find that happy balance.

0 WEEK PARTY ★

6.00pm until late
Guild Tavern and courtyard; Building 106

We are wrapping up Orientation with a huge PARTY! Live-it-up before classes start!

Note: To enter the tavern, you must provide a legal photo ID (e.g. a driver's licence or passport), proving you are over 18 years old.

Just showing your student ID is not enough!

HELPFUL INFORMATION FOR ALL NEW STUDENTS

oasis

OASIS

<http://www.oasis.curtin.edu.au>

OASIS is the student portal, a one-stop-shop for Curtin students. All students are required to log into OASIS at least weekly to access a range of electronic services.

Services in OASIS include the Official Communications Channel, student email, Ask Curtin (Curtin's FAQ database), learning support services (e.g. Blackboard) and Curtin news. eStudent is also available via OASIS and gives you online access to your personal/contact details, enrolment and study plan information and your course results. Through eStudent you can also update your address, phone number and disability details. For many courses, eStudent is also used for online enrolment and class registration.

OTHER INFORMATION

You should now be enrolled in all of your units and have your semester timetable arranged. Your semester timetable will outline your class times and locations, so you might find it useful to keep a campus map handy during your first few weeks of semester. You will find one at the back of this booklet.

Before classes begin you might like to take part in some Curtin events and activities and familiarise yourself with the public transport system and the campus.

During the first few weeks you will probably have many questions. Do not hesitate to ask for assistance, whether it is from your lecturer, school administrative officers or other students.

Many lecturers prefer students to refer to them by their first name. Some students may find this uncomfortable initially, but it should become easier over time. If you are not sure how to address your lecturer or tutor, ask them what they prefer. They will not be offended in any way.

Copies of the Curtin Student A-Z Guide will be given to you when you enrol in your course. Take time to read through your Curtin Student A-Z Guide. It contains valuable information that you may need during your studies. If you encounter problems, the First Year Experience Coordinator and the International Student Advisers can all offer assistance where confidentiality is assured. Located in Building 102 or call 9266 1663 to book your appointment.

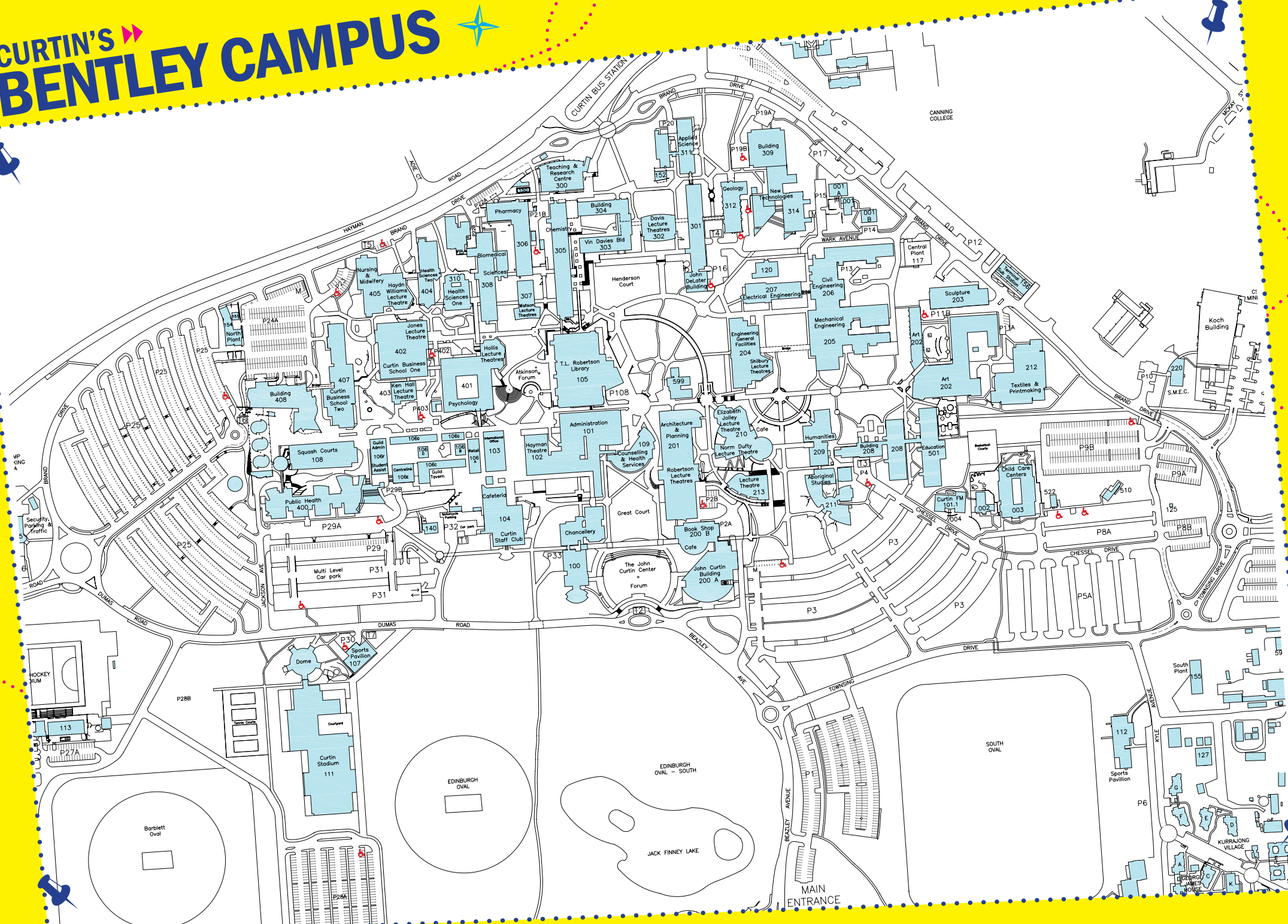
Sharon Woodfield, Sandra Rives
International Student Advisers

Betty Verhelst
Orientation and Student Activities
Coordinator

www.oweeek.curtin.edu.au



CURTIN'S BENTLEY CAMPUS



FOR FURTHER INFORMATION

START – Student Transition And Retention Team
Curtin University of Technology
Building 102
GPO Box U1987
Perth, Western Australia 6845
Tel: + 61 8 9266 1663
Fax: + 61 8 9266 3847
Email: newtocurtin@curtin.edu.au

.....
Curtin University of Technology
CRICOS Provider Code 00301J

Disclaimer and Copyright Information

Information in this publication is correct at the time of printing and valid for 2009, but may change from time to time. In particular the University reserves the right to change the content and/or method of assessment, to change or alter tuition fees of any unit of study, to withdraw any unit of study or program that it offers, to impose limitations on enrolment in any unit or program, and/or to vary arrangements for any program.

Curtin will not be liable to you or to any other person for any loss or damage (including direct, consequential or economic loss or damage) however caused and whether by negligence or otherwise that may result directly or indirectly from the use of this publication.

Copyright Curtin University of Technology 2009

This publication is copyright. Apart from any fair dealing for the purposes of private study, research, criticism or review, as permitted under the Copyright Act, no part may be reproduced by any process without written permission. Enquiries should be directed to START on +61 8 9266 1663

 *Designed by Helen Kwok*
Curtin Multimedia Design Graduate 2008



www.owek.curtin.edu.au



www.international.curtin.edu.au